



# GLEC Framework as the universal method for better data and decisions toward emission reductions



**Eszter Toth-Weedon**

Industry Relations Manager, Smart Freight Centre

**IPIC 2018: 5<sup>th</sup> International Physical Internet Conference**

**Groningen, Netherlands, 21 June 2018**



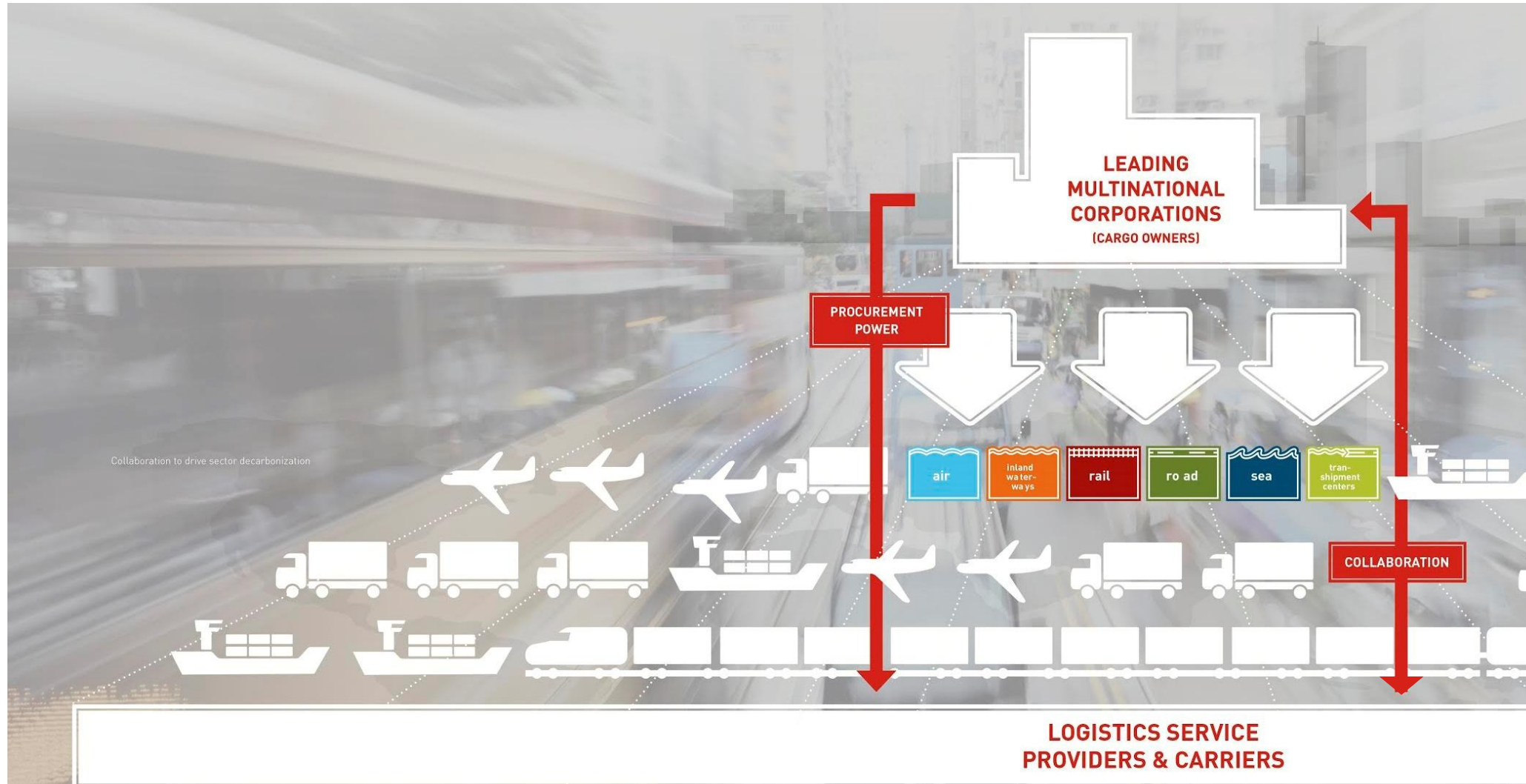


I DON'T BELIEVE IN  
GLOBAL WARMING



# The key to emission reduction lies with business

**SMART  
FREIGHT  
CENTRE**



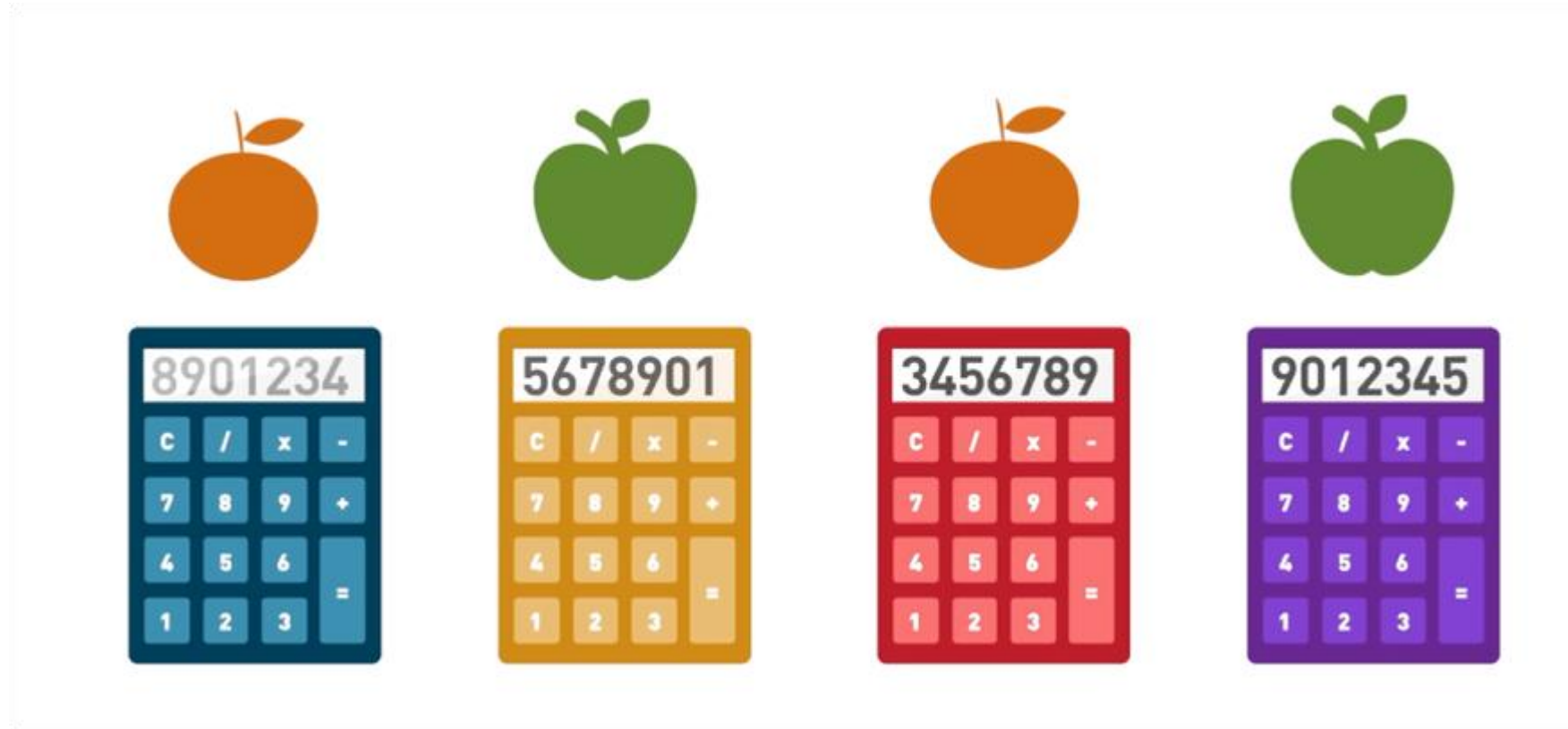
# Multinational's challenge: integrating logistics is complex



- Multi-modal, multi-regional, mostly outsourced
- Difficult to link local projects to impact at the global corporation level
- Multitude of methods, tools, initiatives – difficult to see wood for the trees



# Many methodologies: Comparing apples to oranges

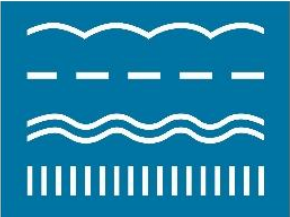


# Global Logistics Emissions Council (GLEC): industry-led and backed by experts to develop 1 global methodology

**SMART  
FREIGHT  
CENTRE**



**GLEC**  
GLOBAL  
LOGISTICS  
EMISSIONS  
COUNCIL



LED BY SMART FREIGHT CENTRE

## GLEC Members

<b>Companies</b>	
<b>Programs</b>	
<b>Associations</b>	

## GLEC Consultees

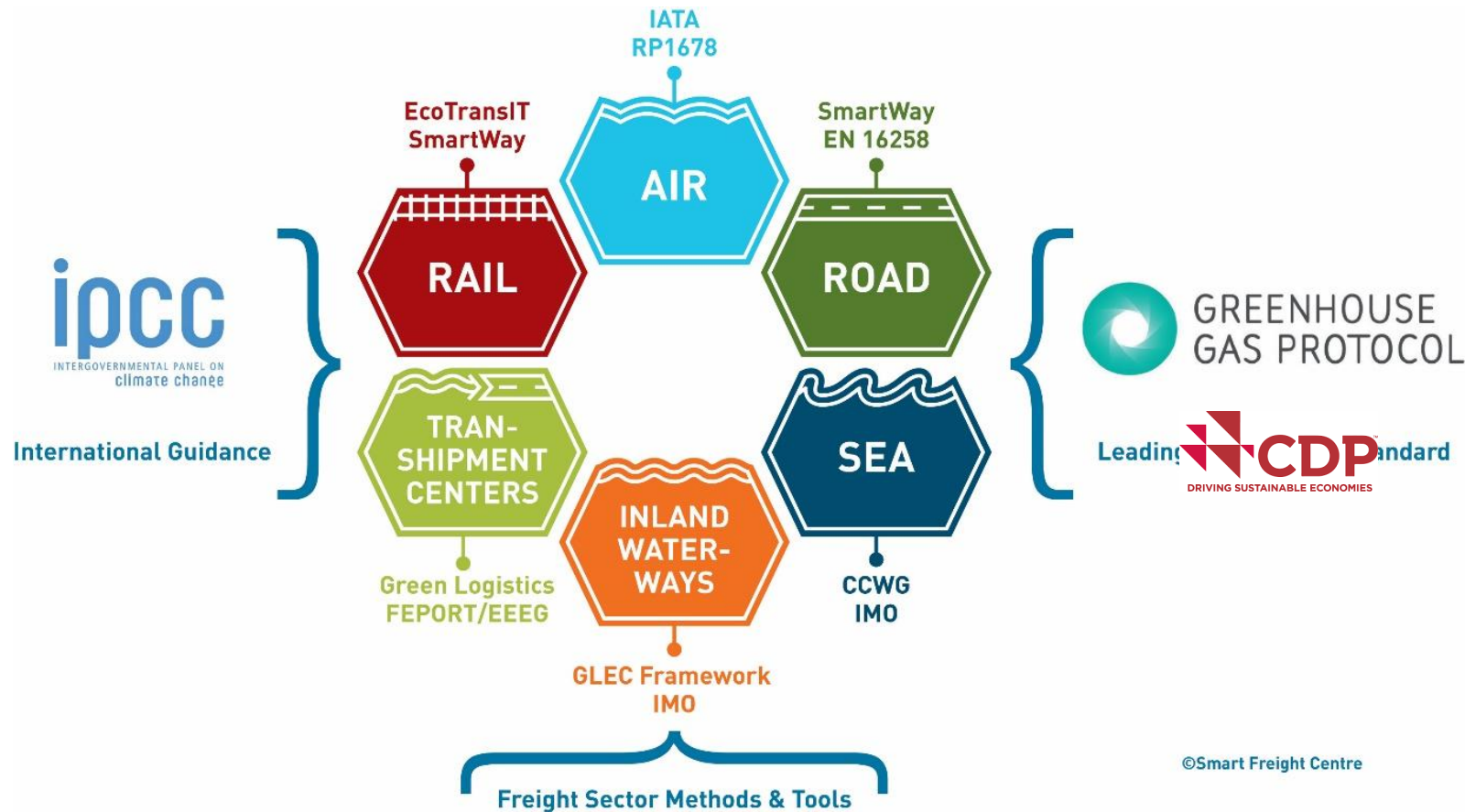
<b>Companies</b>	
<b>Programs</b>	
<b>Associations</b>	
<b>Organizations</b>	

## GLEC Experts

<b>Experts</b>	<p>Buddy Polovick (US SmartWay), Colin Smith (EST), Jens Froese (Jacobs University), Kerstin Dobers (Fraunhofer IML), Marc Cottignies (ADEME)</p>
----------------	---

# GLEC Framework launched in 2016

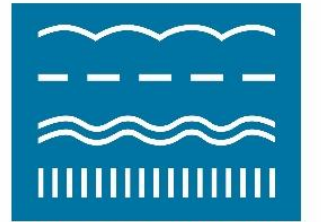
- Global method to calculate emissions consistently across the logistics supply chain to inform business logistics decisions
- Integrates existing methods and fills gaps



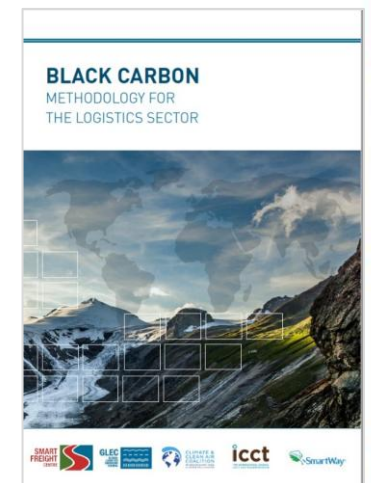
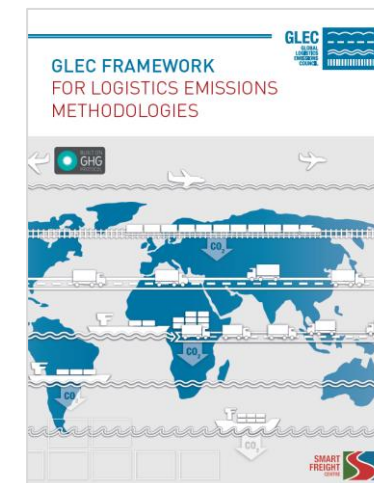
**SMART  
FREIGHT  
CENTRE**



**GLEC**  
GLOBAL  
LOGISTICS  
EMISSIONS  
COUNCIL



LED BY SMART FREIGHT CENTRE



Watch our animation video and download the GLEC Framework

[www.smartfreightcentre.org/glec/what-is-glec](http://www.smartfreightcentre.org/glec/what-is-glec)

© Smart Freight Centre – IPIC2018, 21 June 2018

# What are the next steps for the use of GLEC Framework outputs?



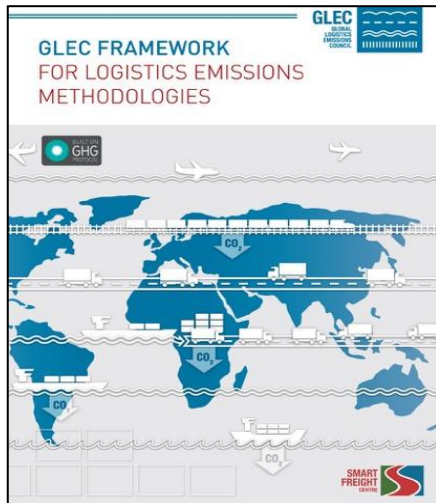
Methodology  
Framework

Accreditation

Declaration

Use of data

Better reporting, business decisions & reduction efforts



- Green freight programs
- Calculation tools
- ICT/TMS providers
- Sector guidance

## GLEC Declaration of company emissions

- Scope 1, 2, 3
- Absolute & intensity
- Coverage %
- Data types: estimated, modelled, calculated

Defining what GLEC data types (estimated, modelled, calculated, consignment) are suitable for different decisions



# Accreditation / Recognition of intermediaries



## Benefits to reporting companies

- Increased credibility of data sources
- Less time/resources for data assurance
- Faster market penetration of GLEC Framework as common norm



Start with GLEC members and consultees: CCWG, GFA, Lean&Green, EcoTransIT, NTM, TK'Blue , UPU

# Steps for companies implementing the GLEC Framework



1. Adopt GLEC Framework

2. Calculate Emissions

3. Obtain Assurance

4. Disclose / Report

5. Use Data

Commit to consistent global methodology

Conduct **GLEC Framework Gap Analysis** to help make the shift

**Integrate GLEC Framework** into logistics systems

Pull data from different sources, giving preference to those **'in conformance with GLEC Framework'** (Green Freight Programs and tools)

GLEC Framework Assurance Guidance to help your auditors



Use 'GLEC Declaration' to report to

- Management
- Customers
- Public reports
- CDP/schemes
- Government

- **Business logistics decisions**
- **Track progress** towards climate goals
- **Inform customers** of emissions reductions
- **Stay ahead of regulatory requirements**

# Better data – better decisions

**SMART  
FREIGHT  
CENTRE**

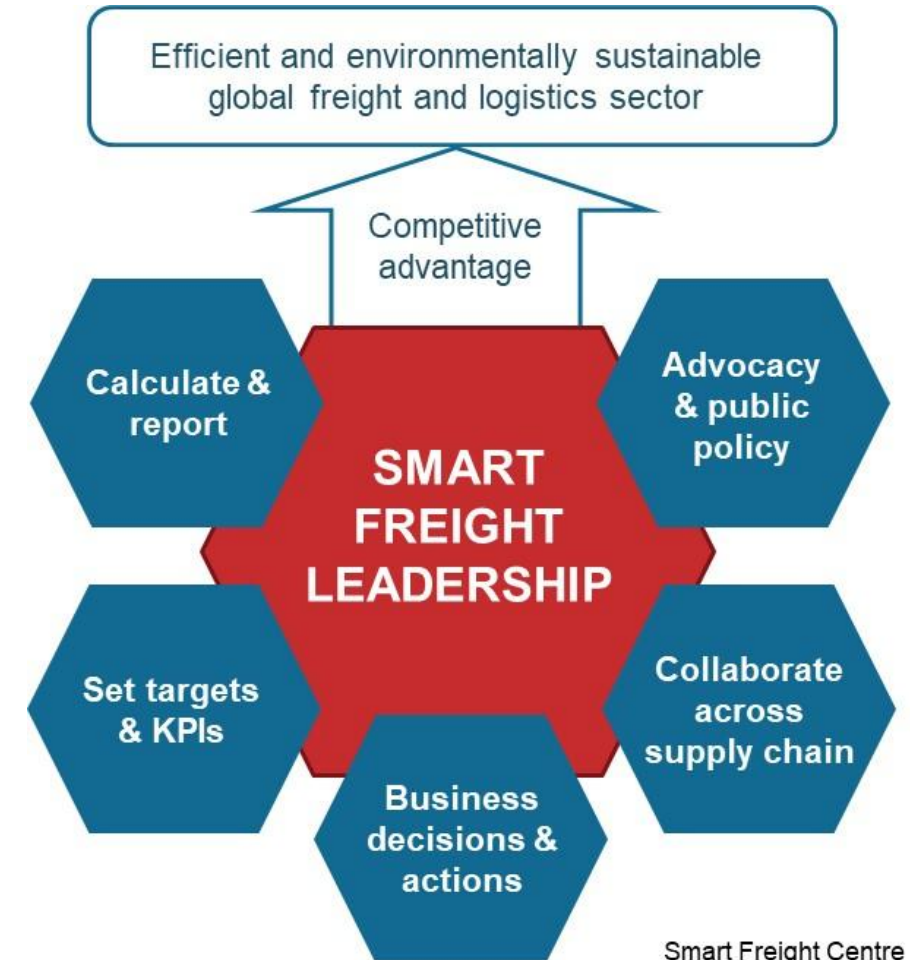


- Why are you calculating logistics emissions?
  - To report – estimated data
  - To review supply chain networks – modeled data
  - To compare logistics service providers – calculated data
  - To track efficiency options on given routes – consignment data

■ Lowest price ~~≠~~ Lowest cost **→** Logistics emissions  
have to become part of logistics and sourcing decisions

- **The goal is logistics emissions reduction**

Spend more time on reduction efforts instead of calculations



Smart Freight Centre

# Join our journey to Smart Freight

**SMART  
FREIGHT  
CENTRE**



## Contact us:

[sophie.punte@smartfreightcentre.org](mailto:sophie.punte@smartfreightcentre.org)  
[eszter.toth-weedon@smartfreightcentre.org](mailto:eszter.toth-weedon@smartfreightcentre.org)  
[www.smartfreightcentre.org](http://www.smartfreightcentre.org)

